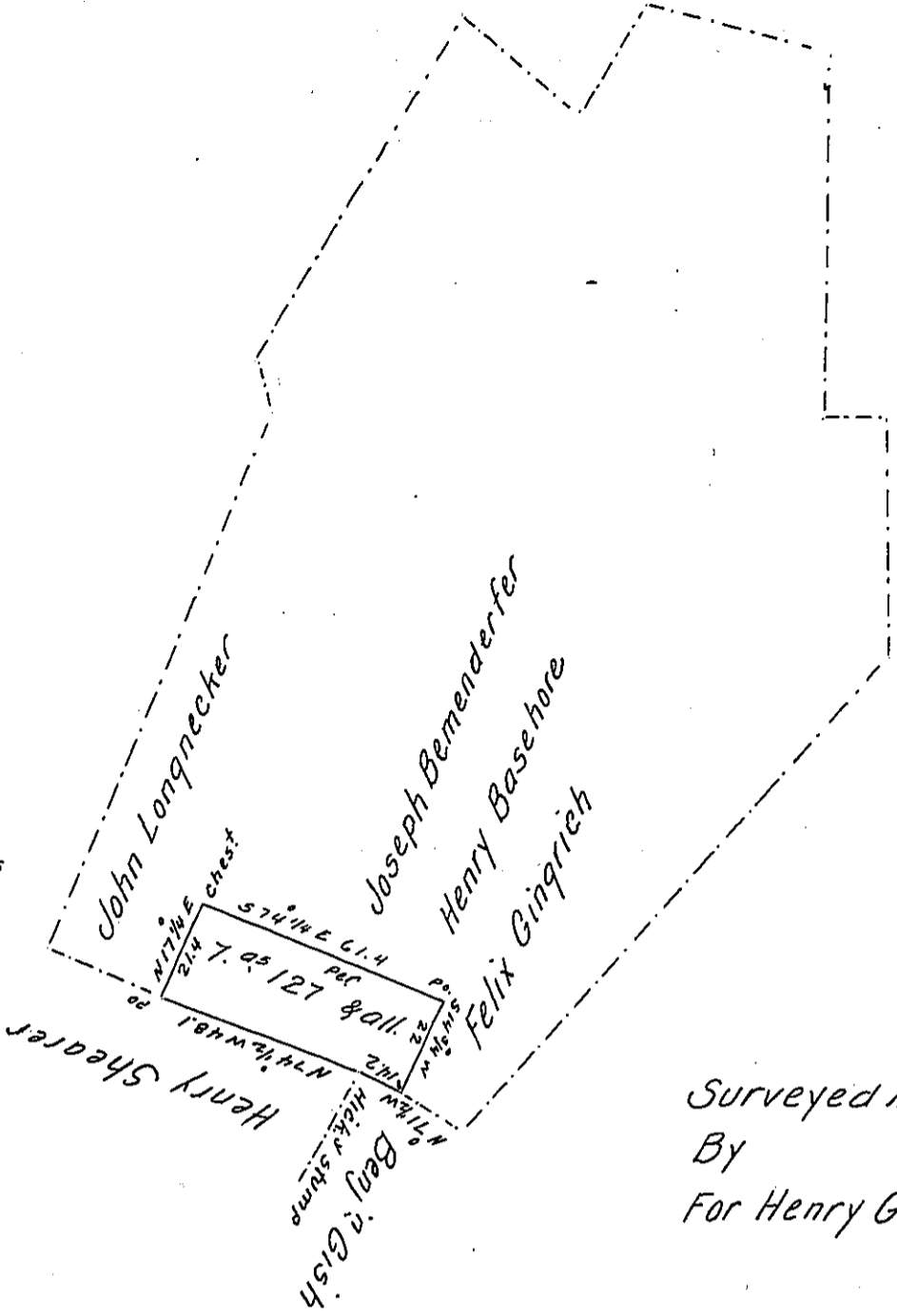


True Meridian Courses
Var. 4 1/4 W.



Surveyed March 1st 1869
By Tho^s Kramer
For Henry Grittinger Esq. D. Sur^s

The above described tract of land Situate in Londonderry township in the County of Lebanon. Containing Seven acres one hundred and twenty seven perches and allowance of six per cent. It being part of a tract of land of 174^{ac} & all. Surveyed for Jacob Grebil in right of John M^cCord. on the 19th day of April 1770. by warrant of the 5th day of Sept^r 1754.

And Surveyed March the 1st 1869. To Henry Shearer.

By Tho^s Kramer

For Henry Grittinger Esq. D. Sur^s

To J. M. Campbell, Esq }
Surveyor General of Penna }

Approved March 6th 1869

Henry C. Grittinger

C.S.

IN TESTIMONY that the above is a copy of the original remaining on file in the Department of Internal Affairs of Pennsylvania, made conformably to an Act of Assembly approved the 16th day of February, 1833, I have hereunto set my Hand and caused the Seal of said Department to be affixed at Harrisburg, this third day of May 1906.

George D. Brown
Secretary of Internal Affairs.